

How to find your "Print Server" IP-unknown IP Number from device

Welcome to VPNCASESTUDY Guide

This case study is donated by Netgear Forum Member "fuser_el" (08-2007)

PS101 - HOW TO - get unknown IP Number from device

Hello,

After lot of hours spent on research, I found a way to get the ip number stored in a PS101 device.

The principle of the solution is to "sniff" the network traffic between the PS101 connected to a computer using a "cross-over" cable.

Section I - Material list:

1) Download upgrade tool for WINXP called "Upgrade_207_XP.zip", developed by the company Sercomm.

http://www.everbesthk.com/8-download...ade_207_XP.zip

NOTE: Netgear distributes the version Upgrade206.exe for example with the PS121, but it used to crash in my WINXP.

2) Download the latest firmware for the PS101v2 Version 6030:

http://firmware.netgear-forum.com/PS101/PS101_6030.zip

3) Now we need to download some tools in order to "sniff" the traffic in the network, Ethereal (www.ethereal.com)

<http://www.ethereal.com/distribution...tup-0.99.0.exe>

and the WinPCap 4.0.1 drivers, that enable your network card to receive all packets distributed in network:

http://www.winpcap.org/install/bin/WinPcap_4_0_1.exe

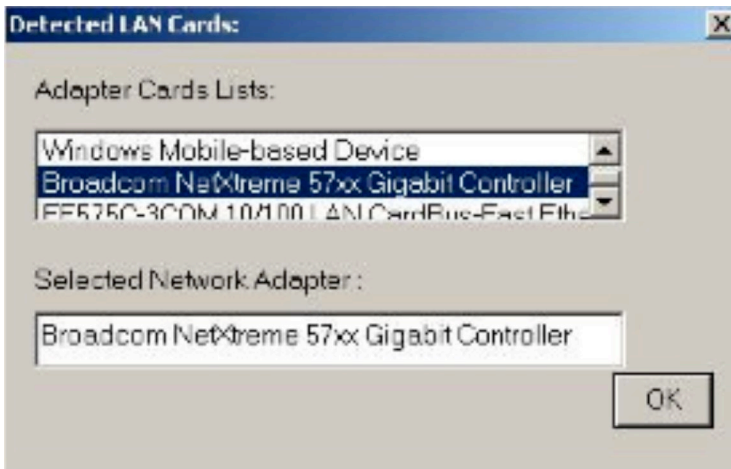
Section II - Doing the firmware upgrade:

ATTENTION: If you dont want to do the upgrade, go to Section III.

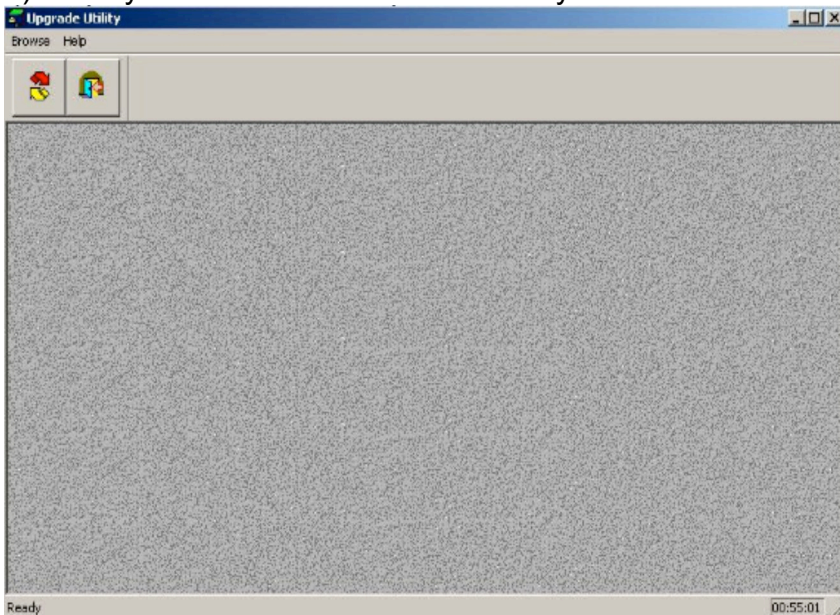
Note: Check if your device is powered on and connected to the network cable.

1) Starting the upgrade utility "Ugtil":

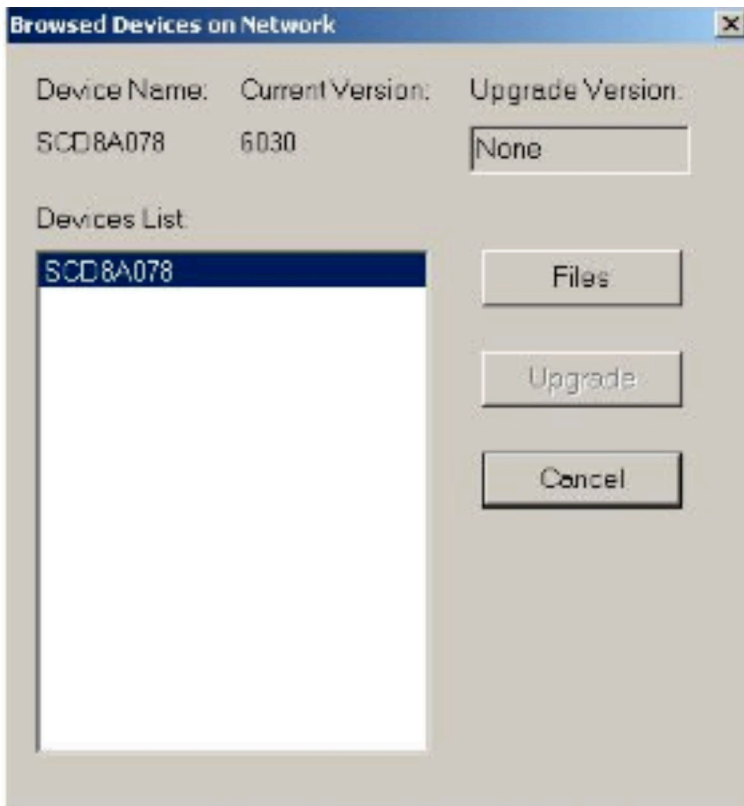
First you are prompted to choose the network adapter used in your PC to connect to the PS101 device.



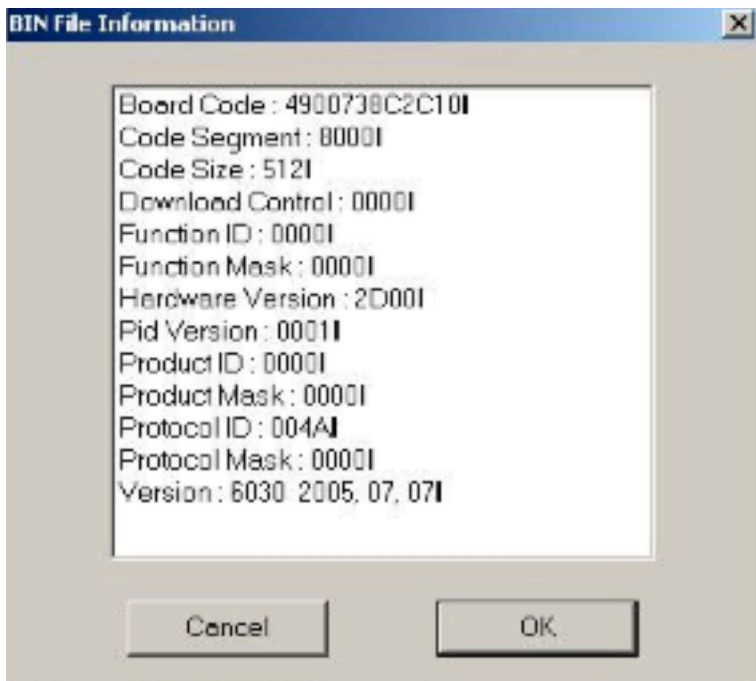
2) Then you have to click the "red and yellow" arrows in order to detect the PS101 device:



3) If everything goes well, you should get the following screen:



4) Then click on "FILES" and choose the firmware file " *.bin" and the Click OK.

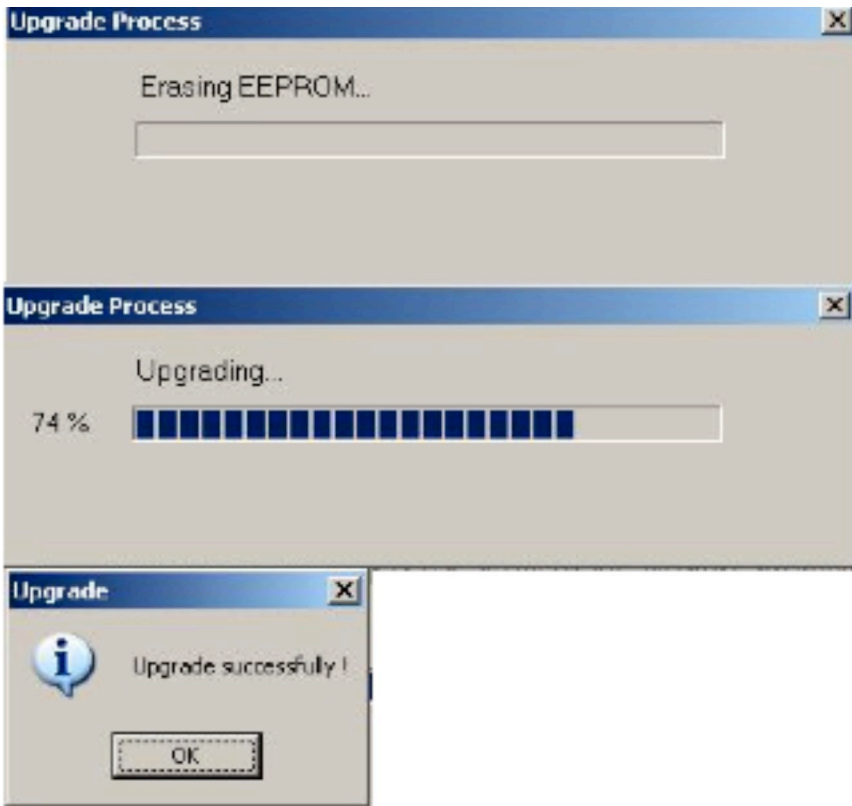


5) After the BIN File Information Screen has been shown, click on OK

NOTE: If you have the wrong firmware version, you will get the following message:

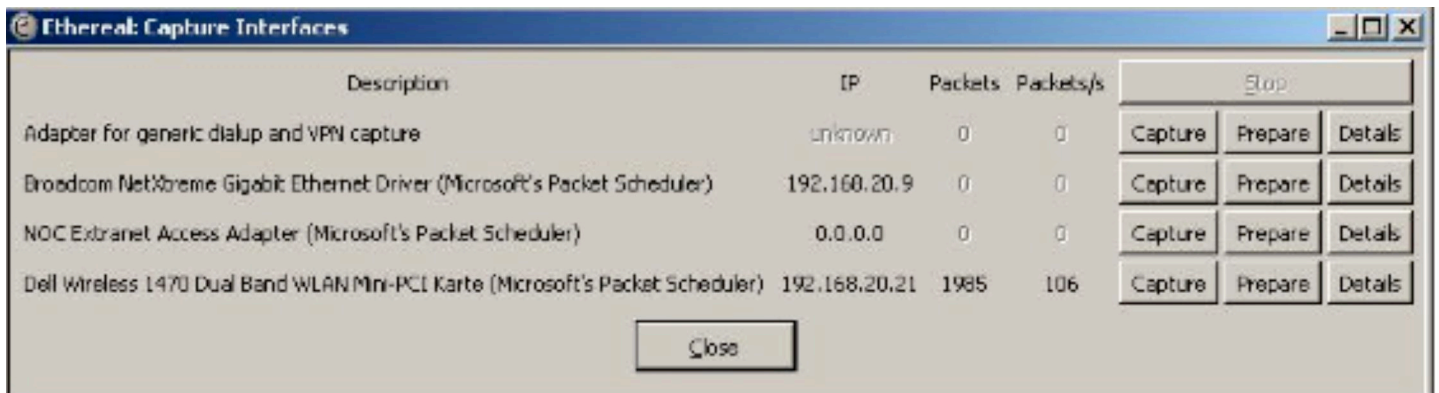
"H/W Types Mismatch!"

6) If did not get an error message, click on "UPGRADE":

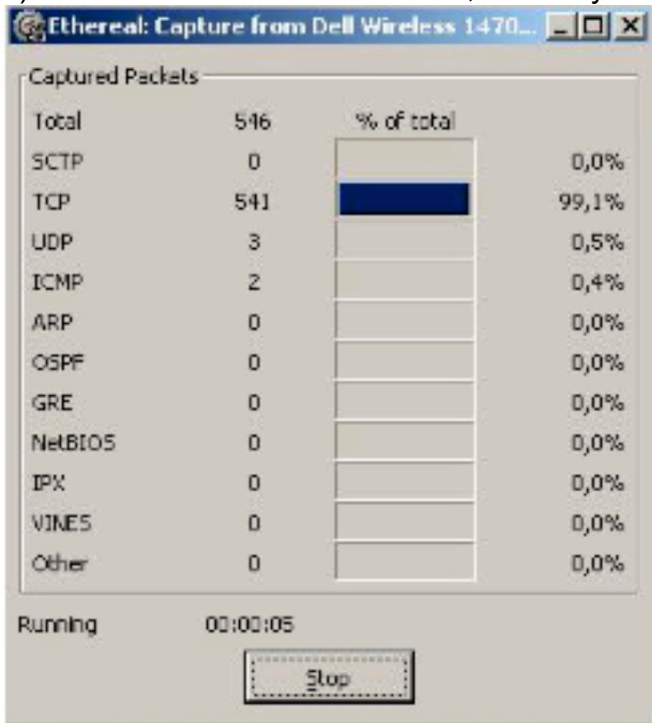


Section III - Getting the IP Address:

1) Please start the "ethereal" application, and click on the first icon from the left to the right direction, "List the available capture interfaces...". Here you should again choose the same network adapter used to connect your PC to the PS101 device.



2) Click on the CAPTURE button, next to your network adapter's name.

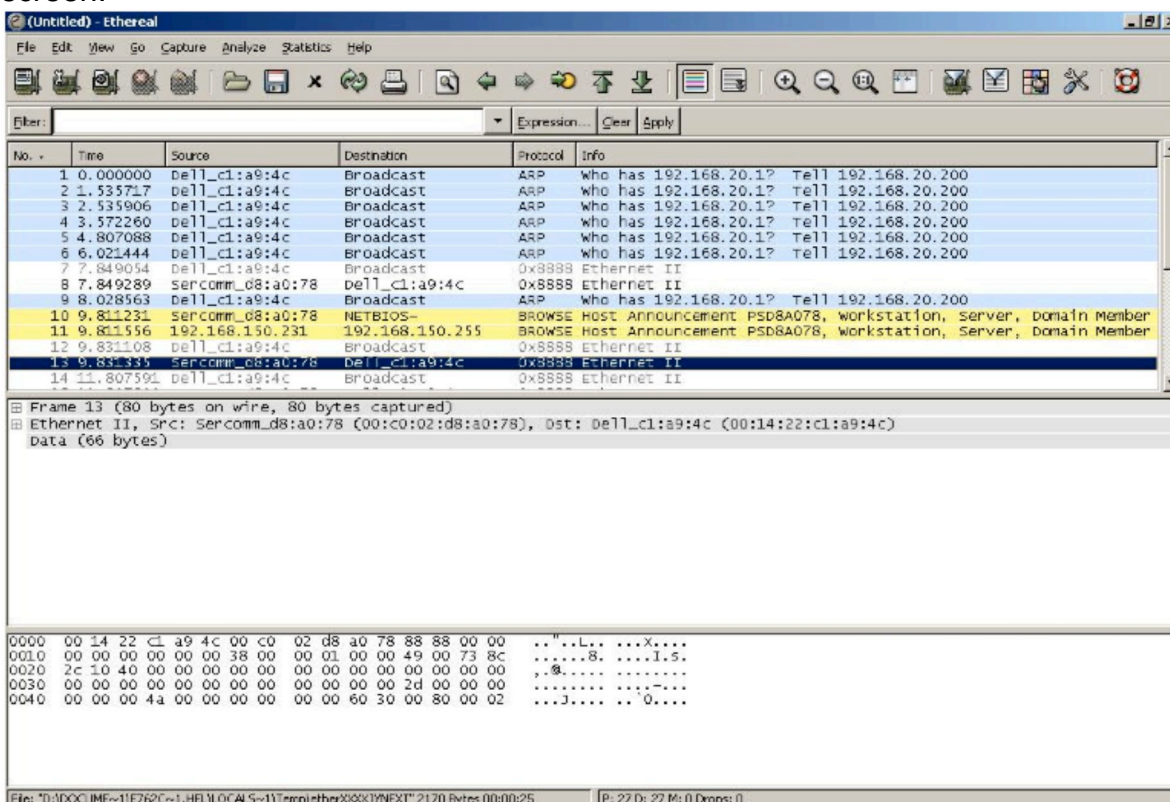


Up this moment we are "sniffing" all packets passing through your network adapter.

3) Then repeat the steps 1 to 3 from Section II:

That procedure is used to trigger the communication between the PC and the PS101. In this data exchange we will be able to get the desired data.

4) Go back to the "ethereal" application and click on STOP. After this, you should get the following screen:



My PC was configured with:

IP: 192.168.20.200

Submask: 255.255.255.0

Gateway: 192.168.20.1

Than in the traffic,we are able to see important informations, marked with yellow in:

Line 10:

Source: Sercomm_d8:a0:78, this is the MAC-ID from the PS101 device

Host Announcement: PSD8A078 this is the DEVICE NAME

Line 11:

Source: 192.168.150.231 this is the static IP Number from PS101

Now you just have to change your IP address and gateway address in your PC, to something "192.168.150.XXX" and "192.168.150.001" respectively.

After that, go to your webbrowser and type:

<http://192.168.150.231> and you'll be able to change the parameters the way you want.

Disclaimer

Both ProSafe VPN/Firewall Routers and ProSafe VPN Client have several ways of setting up and configuring VPN tunnels. The settings may not be the best for your situation and some settings are situation specific.

This case study is published to guides you to setup your VPN Tunnel and VPNCASESTUDY.COM do not held any responsibility of any mistakes or errors.

Please contact us at info@vpncasestudy.com or visit our site at <http://www.vpncasestudy.com>